



# WATER RESILIENCE, CLIMATE INFORMATION, AND WORKFORCE DEVELOPMENT

## IN THE SAN JOAQUIN VALLEY



### THE CALIFORNIA NEVADA ADAPTATION PROGRAM (CNAP)

CNAP focuses on adaptation by preparing communities for state- to local-level action to address regional climate hazards. This emphasis on adaptation provides opportunities to address some of the most pressing climate issues in California and Nevada at the regional and community level. One of CNAP's five program areas involves building water resilience in the southern San Joaquin Valley through research, curriculum, and workforce development.

### CHALLENGE

The San Joaquin Valley and its primary industries of agriculture and fossil fuel extraction are facing significant challenges, related to climate extremes and implementation of new policies. Weather extremes, particularly drought and flooding, coupled with the recent Sustainable Groundwater Management Act pose significant challenges to agricultural productivity. In Kern County, the southern part of the San Joaquin Valley, the fossil fuel industry produces 80% of the state's oil and gas and is undergoing additional transformation as the fossil fuel industry is impacted by climate adaptation and carbon management strategies.

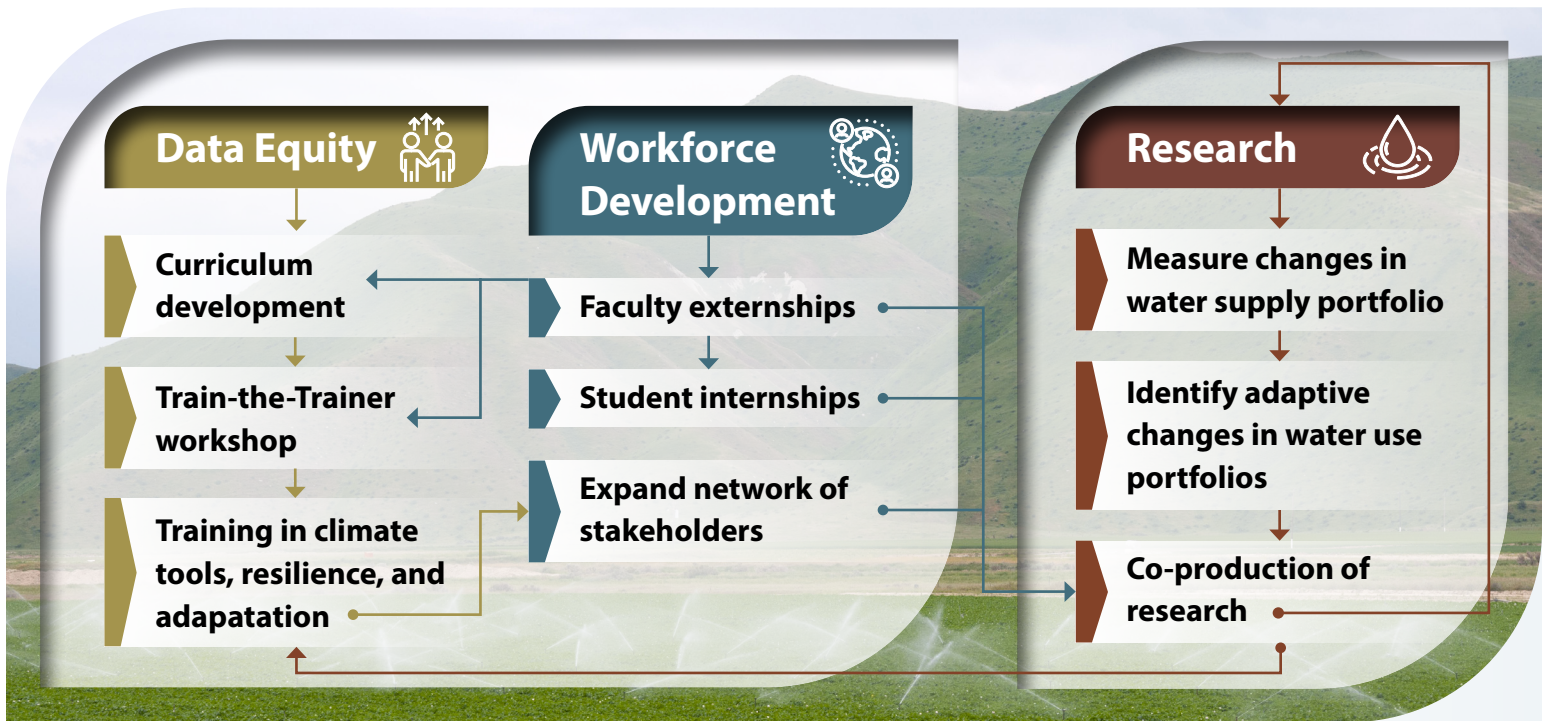
### APPROACH

CNAP's approach to climate and water resilience in the San Joaquin Valley is based on three key pathways — research, workforce development, and data equity. These pathways are supported by the core tenets of knowledge-to-action partnerships, JEDI principles (Justice, Equity, Diversity, and Inclusion), climate literacy, and community resilience.

Our multi-disciplinary team of climate scientists, educators, hydrologists, economists, and social scientists focus on the region's acute climate impacts: drought, extreme heat, water quality, air quality, and their impacts on frontline communities. We work with community partners to leverage local knowledge to promote equitable adaptation approaches.

### MISSION

To improve water resilience in the San Joaquin Valley by providing quality climate information tools to community colleges and by generating new adaptation models for agriculture and water management.



## PROJECTS

### DATA EQUITY

**Curriculum development:** Our team has co-developed and piloted a two-week climate information module at Bakersfield College with faculty members Jalisca Thomason and James Selgrath. The course was taught in five in-person and online agricultural science, agricultural business, and natural resource classes.

**Expansion:** The goal is to refine the two-week module and expand its use across the Central Motherlode Regional Consortium (CRC) of community colleges in the San Joaquin Valley. The CRC comprises 15 community colleges and serves over 100,000 students.

**Train-the-trainers:** The two-week module will be presented at the California Agricultural Teachers' Association (CATA) summer and winter conferences.

We will produce English and Spanish language teaching materials for our expanding educator network.

### WORKFORCE DEVELOPMENT

A program of faculty externships will bring faculty members from the Kern Community College District (KCCD) to Scripps Institution of Oceanography and/or UC Merced for two-month periods during summer sessions.

A program of student internships will bring KCCD students who have taken courses incorporating the two-week climate information module to gain exposure to a four-year university setting and to assist on student research projects.

### RESEARCH

Through co-production with KCCD faculty and an expanding network of community stakeholders, including growers, the Kern County Farm Bureau, and Kern County water managers, we will build on existing research with California Department of Water Resources (DWR) to understand changing water use portfolios.

We will co-produce research to understand adaptation responses to the joint stresses of climate change and the Sustainable Groundwater Management Act (SGMA) which requires sustainable groundwater usage by the year 2040.

Research projects will include the input of KCCD and CRC faculty members and students engaged through our faculty externship and student internship programs.

### PARTNERING INSTITUTIONS

**Scripps Institution of Oceanography (SIO)**  
**University of California, Merced**  
**Kern Community College District**

### FOR MORE INFORMATION, PLEASE CONTACT:

*Dr. Tom Corringham, SJV Project Lead, SIO*  
[tomc@ucsd.edu](mailto:tomc@ucsd.edu)

*Dr. Tamara Wall, CNAP co-Lead, DRI*  
[tamara.wall@dri.edu](mailto:tamara.wall@dri.edu)

*Dr. Julie Kalansky, CNAP co-Lead, SIO*  
[jkalansky@ucsd.edu](mailto:jkalansky@ucsd.edu)

*Ms. Ariel Choinard, CNAP Project Coordinator, DRI*  
[ariel.choinard@dri.edu](mailto:ariel.choinard@dri.edu)